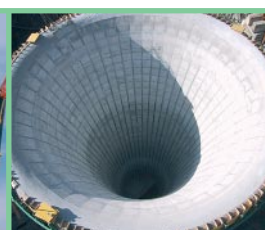
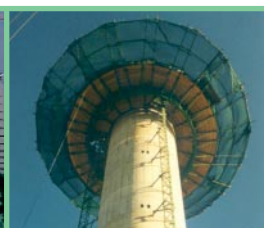
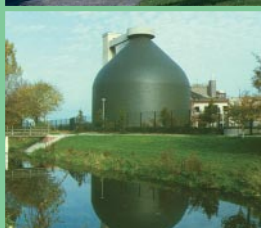


A company of experts.

Always an innovator.

RSB has focused on advanced formwork solutions for circular structures since the company was founded in 1978. Today RSB is the world's leading supplier of circular formwork, with satisfied customers all around the globe. They value the products and services provided by RSB and rely on its expertise.

RSB offers one-stop shopping for a complete range of products and services: planning, engineering, project management, formwork supply and assembly. RSB's experienced on-site supervisors also keep construction running smoothly around the clock.



Digesters

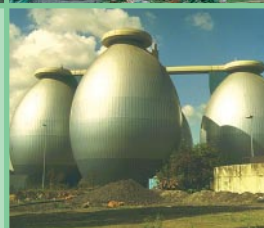
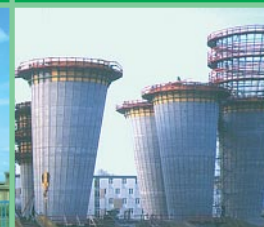
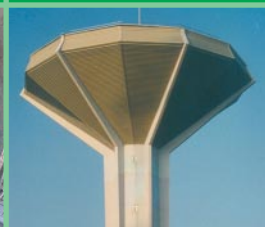
Round tanks

Water towers

Special structures

Towers

Tunnels



The specialist in digester construction.

True one-stop shopping.

RSB means top quality formwork systems for building digesters. Construction companies and their clients – owners of sewage treatment plants, wastewater authorities, and industrial enterprises – all over the world trust RSB, an innovative specialist based in the Vorarlberg region of Austria. That's because RSB offers one-stop shopping with technically mature formwork technology for watertight concrete structures, as well as a full range of important services – design, planning, structural engineering, assembly/disassembly, project support, and other custom options for individual customers.

Funnel-shaped formwork.

Stable structures.

The funnel-shaped parts of digesters are subject to very specific requirements for concrete placing and compacting to achieve excellent concrete quality. That's why demanding customers all over the world use reliable RSB formwork systems. The self-supporting steel formwork for funnel-shaped structures is free of through-wall ties and is protected against buoyant forces at its lowest point. That design principle ensures maximum stability and absolute dimensional accuracy. Prefabricated formwork elements are positioned and bolted together to form a self-supporting steel skeleton that is funnel shaped but still open.

The trapezoidal form boards are not positioned and wedged into the steel skeleton until concreting begins.

Concreting itself proceeds smoothly from the bottom to the top in a continuous spiraling operation. The key advantage of the RSB system: Low concrete drop heights and simple workability allow stiffer concrete to be used, providing optimum concrete quality and a watertight funnel section.

RSB funnel-shaped formwork

- Fast, easy assembly
- Simple, continuous concrete placement
- Low concrete drop heights
- Outstanding concrete compactability
- Free of through-wall ties
- Optimum surface quality
- Superior concrete quality

Cylindrical formwork.

Top-quality system.

RSB's cylindrical formwork with steel or wood sheeting comes with a ring-shaped supporting structure that is placed on the inside or outside of the digester and used as an accessible working platform. The solid interior and exterior formwork is designed to hang from this work platform, which is supported by three or more poles. The platform and formwork can be lifted vertically to any desired elevation without the need for a crane.

Advantages: This system creates the basis for efficient, economical construction, and the stability of the formwork

also allows any type of concrete to be used.

RSB cylindrical formwork

- Simple handling
- Free of through-wall ties
- Maximum dimensional accuracy and perfect surface quality
- Simple assembly/disassembly
- Craneless climbing
- Excellent concrete compactability
- concrete drop heights
- Integrated safety scaffolding and work platform

Conical formwork.

Absolute top quality.

RSB's conical formwork uses a self-supporting steel skeleton that is simple to assemble and disassemble. The steel skeleton acts as a structural framework, directly distributing all loads into the cylindrical walls. The applied formwork skin produces an extremely smooth interior surface. A top formwork allows efficient concreting even for steep-sloped cone structures. Assembly/disassembly is no problem either, since it is done simply and safely from the work platform of the cylindrical formwork and the rotating ladder supported by the center tower. The formwork parts can be

removed through small openings, such as the gas dome opening at the top of the digester. The RSB formwork system also includes solutions for various configurations of the transition section between the cylindrical and conical parts of the digester.

RSB conical formwork

- Free of through-wall ties
- Simple assembly/disassembly
- Simple concrete placement due to low drop heights
- Outstanding concrete compactability
- Extremely smooth surfaces
- First-class concrete quality

